

## WHAT ARE THE SYMPTOMS?

- Blurred vision
- Double vision
- Dark spot in the center of vision
- Difficulty reading
- Difficulty seeing at night
- Droopy eyelid
- Eye pain
- Flashing lights

### NO DIABETIC RETINOPATHY



### DIABETIC RETINOPATHY



## ANNUAL EYE EXAM

Diabetic Retinopathy is the leading cause of blindness in working-age adults who are living with diabetes.

95% of vision loss due to diabetic retinopathy can be prevented with early detection.

*Call us for more info*

**Clinic Coordinator:**

**+1-208-607-4518**

**Clinical Supervisor:**

**+1-208-542-4235**



Mountain View Network

**RetinaVUE  
700**

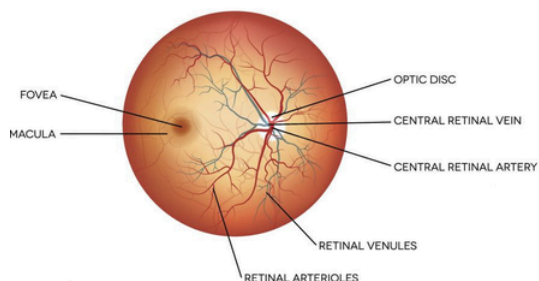
**Imager**

*We are your partners in  
health and wellness.*

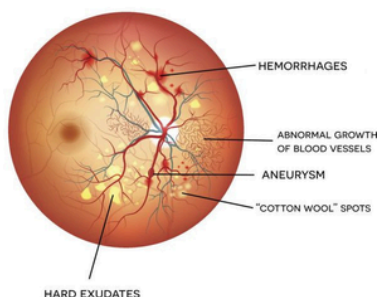
# — DIABETIC RETINOPATHY

Diabetic retinopathy (DR) is a complication of diabetes that damages the blood vessels in the retina, the light-sensitive tissue at the back of the eye.

NORMAL RETINA



DIABETIC RETINOPATHY



In 2021, an estimated 9.6 million people in the United States had diabetic retinopathy.



DR can develop in anyone with type 1 or type 2 diabetes, but the risk increases with longer duration of diabetes and less controlled blood sugar.

Other risk factors include high cholesterol and smoking. A simple annual eye exam can identify problems early before they progress to something serious.

**This service is available:**

- Mobile Clinic
- Clinic
- Community Events

## THE **RetinaVUE** 700

**FAST, PORTABLE, RELIABLE.**  
This device can detect signs that indicate retinopathy.

For more information and to schedule an appointment call us at:

**Clinic Coordinator:**

**+1-208-607-4518**

**Clinical Supervisor:**

**+1-208-542-4235**

